



Warewashing
Large pre-wash zone for green&clean
multi-rinse Rack Type with Ventless Heat
Pump, ZERO LIME Device

ITEM # _____

MODEL # _____

NAME # _____

SIS # _____

AIA # _____



535035 (NLPWEV)

Large pre-wash zone for green&clean Multi Rinse Rack Type Dishwasher with Ventless Heat Pump, ZERO LIME Device, WRAS/ Watermark approval.

Short Form Specification

Item No. _____

Unit to be green&clean large pre-wash module suitable to be installed with green&clean multi-rinse rack type dishwasher having Ventless Heat Pump. Electrical characteristics to be __ 400V three phase operation. The pre-wash section uses only cold water providing to upper and lower arms so food remains are not "baked" onto the plates in order to have better pre-wash performance. Insulated door with easy access for silent operation and heat preservation. Construction in AISI 304 stainless steel. ZERO LIME device automatically de-scales the whole hydraulic circuit and the pre-wash chamber. CLEAR BLUE filtering system removes majority of soil from the wash water to ensure clean water for long time. Built-in drain valve in the tank allows automatic dump and fill to refresh the water in the tank without interruption. Standard end of the day self-cleaning cycle to wash chamber completely including the internal door. Suitable for any feeding direction of the dishwasher thanks to easy reversibility on-site. Full pre-arrangement to be connected with green&clean multi-rinse rack type dishwasher without any modification.

APPROVAL: _____

Main Features

- The unit must be connected with multi-rinse rack type dishwasher with Ventless Heat Pump and Automatic Descaling Device.
- Deep drawn pressed tank with fully rounded corners, sloped towards the drain to prevent dirt build-up, provides fast drainage in just a few minutes. With no welding points the pressed tank offers a guaranteed water tight solution.
- Manual process of pre-wash spraying replaced by automatic prewash module before the main wash section.
- Pre-wash section uses cold water so food remains are not "baked" onto the plates in order to have better pre-wash performance.
- Large counter balanced inspection door allows unrestricted all-round access to the internal area. Door is insulated with injected foam. This adds strength as well as reduces noise and heat loss.
- IP25 protection against water jets, solid objects and small animals (larger than 6 mm).
- Built-in drain valve in the tanks allows automatic dump and fill to refresh the water in the tank without any interruption of the washing process.
- Automatic drain, clean and sanitize cycles featured as standard. The internal chamber, including the internal door is completely cleaned or sanitized avoiding bacteria proliferation for maximum hygiene and reducing manual work/time for operator.
- The feeding direction can be either left to right or right to left as it's reversible on site.

Construction

- All main components made in heavy duty anti-corrosive 304 type stainless steel: internal chamber, external, front and side panels, pre-wash arms and rack transportation system.
- Adjustable feet for full access underneath the machine for cleaning.

Sustainability

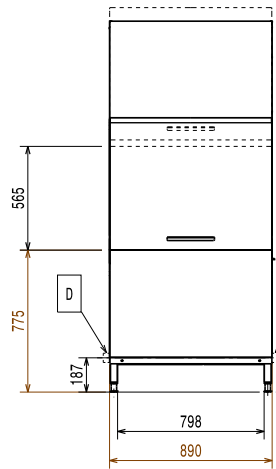


- Automatic Descaling Cycle ensures total scale removal from the hydraulic circuit and the pre-wash chamber allowing ultimate performances and lower energy consumption thanks to highly efficient heating elements.
- Multi-stage advanced filtering system removes soil from the pre-wash water providing cleaner water thus ensuring better washing performance.
- The unit is built on modularity concept to easily connect with multi-rinse rack type dishwasher without any modification including power, inlet water, drain water, detergent and rinse aid connections.
- Auto-start/stop ensures that the zone runs only when a rack is passing through it. This reduces both water, energy consumption and noise.

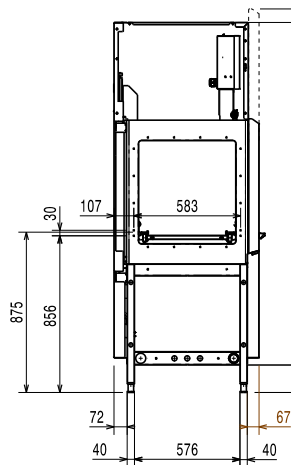
Optional Accessories

- Kit to convert pre-wash module to wash module PNC 865281

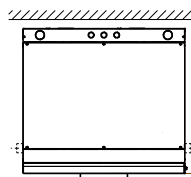
Front



Side



Top



- CWI = Cold Water Inlet
- D = Drain
- EI = Electrical inlet (power)
- EO = Electrical Outlet
- EQ = Equipotential screw
- ES = Electrical signal IN/OUT
- HWI = Hot water inlet
- U = USB port
- WI = Water inlet

Electric

Pre-wash tank heating elements are activated only during sanitation cycle.

Supply voltage:	380-415 V/3N ph/50 Hz
Pre-wash tank heating elements:	14 kW
Default Installed Power:	15.5 kW
Pre-wash pump size:	1.5 kW

Water:

Pre-wash tank size:

Key Information:

For transportation purpose only, the depth can be reduced to 795mm by removing the door handle.

Reference norm used to measure the noise: IEC60335-2-58 annex AA.

Height with door open:	2100 mm
Charging hole size (width):	530 mm
External dimensions, Width:	890 mm
External dimensions, Depth:	825 mm
External dimensions, Height:	2020 mm
Charging hole size (height):	490 mm
Net weight:	167 kg
Shipping weight:	191 kg
Shipping height:	2235 mm
Shipping width:	1025 mm
Shipping depth:	910 mm
Shipping volume:	2.08 m ³
Pre-wash temperature:	10 - 40 °C

Sustainability

Noise level:	<62 dBA
---------------------	---------